

APPENDIX F

Hunter and Trapper Committee Presentation

Water Licence Application for Construction of Inuvik - Tuktoyaktuk Highway
Submission to the Northwest Territories Water Board
Appendix F: Hunter and Trapper Committee Presentation
June 2013

Inuvik to Tuktoyaktuk Highway Construction Activities

**Presentation to the Tuktoyaktuk
Hunters and Trappers Committee**

**Michael Fabijan, KAVIK-STANTEC
June 6, 2013**



KAVIK-STANTEC

Presentation outline

- Construction Planning (2013-2016)
 - Water sources (*Water License*)
 - Winter and summer construction camps (*Water License*)
 - Winter/Ice roads and access trails (*Water License*)
- Pre-construction surveys and assessments (2013)
 - Fish and Fish Habitat Assessments (*DFO Auth., DFO License to Fish & ARI Scientific Research License*)
 - Identification of Navigable Watercourses (*Nav. Waters Auth.*)
 - Rare Plant Survey (*EISC screening, ARI Scientific Research License*)
 - Archaeology Survey (*EISC screening, PWNHC Permit*)
- Wildlife and Wildlife Habitat Protection Plan (Update)

Water Sources

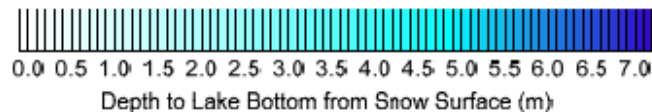
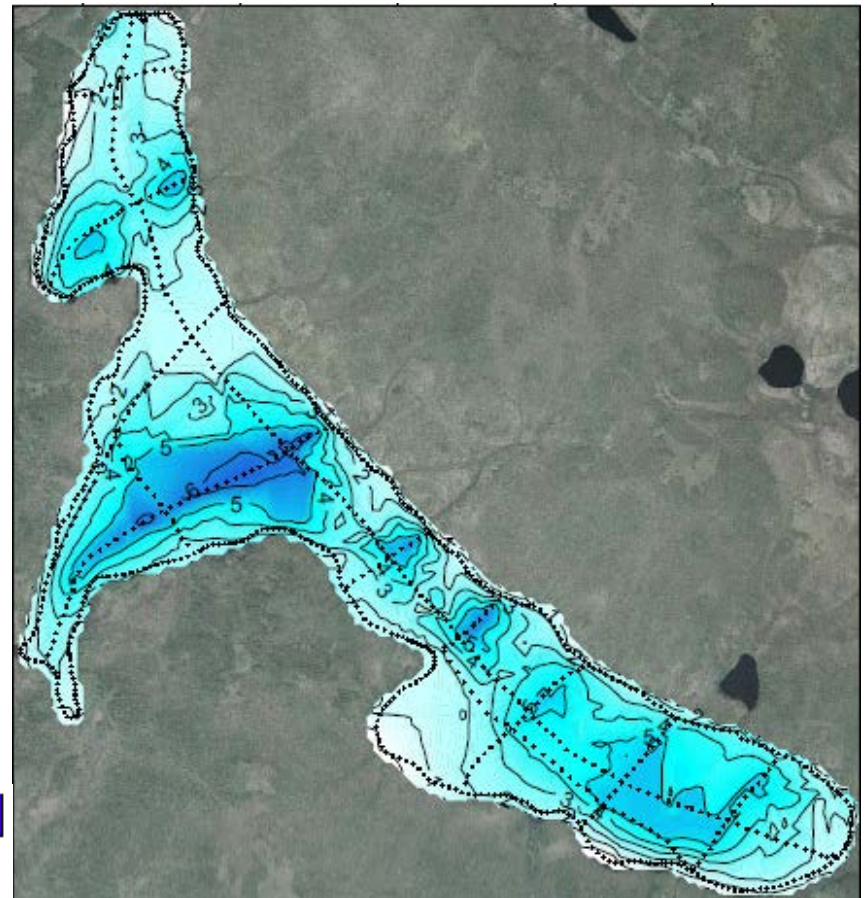
- Up to 56 lakes are being considered for use as water sources for the construction of the highway, and for the Water License application
- Bathymetric surveys will be completed to determine the depth and volume of water in these lakes
- Need to identify lakes that meet DFO guidelines for water withdrawal
- No more than 10% of water from any water body will be withdrawn during any year
- Not all sources will be used in any year
- Water sources are close to alignment and borrow sources



Water Sources

BATHYMETRIC SURVEYS

- Conducted using boats and “fish finders”
- IMG-Golder will complete in July
- Accessed by helicopter



Winter Construction Camps

- Capacity for approximately 60 people each
- 4 camps will be operating each winter (2 Inuvik side, 2 Tuktoyaktuk side)
- Located at borrow sources (or at locations near the highway alignment)
- At end of season, may store or move and be stored at next camp location

Source
177 (1 year)
170 (2 years)
174 (2 years)
173/305 (1 year)
309 (1 year)
312W (2 years)
PW19A (1 year)
PW18 (2 years)
GSC3 (1 year)
PW10 (2 years)
I401A (1 year)

Summer Construction Camps

- Capacity for approximately 20 people each
- 2-4 camps will be operating each summer
- Located on the constructed embankment for the highway
- Will move along embankment during the season
- Will demob at end of season

	North	South
Yr 1	KP100 - KP120 (2 camps)	KP0 - KP20 (2 camps)
Yr 2	KP80 - KP100	KP20 - KP40
Yr 3	KP60 - KP80	KP40 - KP60
Yr 4	KP60 - KP120	KP0 - KP60

Winter Roads and Access Trails



WINTER ROADS:

- Constructed to support embankment construction and material hauling from borrow sources
- Use of winter roads will be routed to minimize overland travel
- Winter roads will be constructed by spraying water on a packed snow trail (minimum thickness of 20 cm)
- Ice roads will be constructed by clearing and flooding the surface of lakes
- Water for winter roads will be from approved sources

Winter Roads and Access Trails

ACCESS TRAILS:

- Constructed to complete clearing of alignment, to access borrow sources, to begin construction of winter roads, and to move camps
- Will be constructed from compacted snow
- Will maximize over-ice travel (minimize overland travel)



Fish & Fish Habitat Assessment

- Up to 20 crossings may require re-assessment
- Supports DFO Authorizations
- Planned for late summer or fall 2013

HABITAT:

- Will assess crossing site and upstream/downstream of crossing
- Information collected will include:
 - stream flow, velocity and water depth
 - stream width and channel width
 - description of banks & stream bottom
 - presence of vegetation
 - photos and GPS coordinates





Fish & Fish Habitat Assessment

FISH:

- Will look for fish presence at crossings
- Will catch fish using a variety of methods (electrofishing, nets, etc.)
- Information collected will include:
 - type of fish
 - fish length & weight
 - Presence of parasites, deformities, etc.
- Some fish may be kept to determine sex, maturity and age
- Will need DFO License to Fish & ARI Scientific Research License

Navigable Waters Act Approval

- Transport Canada reviews all construction in or over watercourses that could be deemed 'navigable'
- There are 13 watercourses that will require notification to and review by Transport Canada under the current *Navigable Waters Protection Act*
- Purpose of the Act is to protect the public's right to navigation



Navigable Waters Act Approval

Need to determine:

- Are any of the watercourses or waterbodies (i.e., lakes/ streams) along the ITH alignment currently being used by vessels (boats)?
- Would/could any of these watercourses or waterbodies be used for boating in the future?
- What types/sizes of vessels (boats) are/could be used?
- What months are/could the watercourses be used?

Rare Plant Survey



- To be conducted at additional borrow sources identified in 2012 and 2013 studies as being potential developable (174, 309, 307, 312W, PW19A , PW17-18, PW13, PW10-11, GSC3, GSC4, and I401A)
- Planned for July 2013
- Approx. 2 borrow sources can be surveyed each field day
- Will coordinate activities with Archaeological surveys

Are there any odd plants at these sites?

Archaeological Survey

- Archaeological Impact Assessments (AIAs) will be conducted under PWNHC permit at
 - borrow sources investigated during the winter of 2013
 - borrow sources scheduled for investigation in 2014
 - any additional areas required (camp locations, storage areas)
- Planned for July 2013
- 2 borrow sources/borrow source areas can be completed each field day
- If “anything” is found, PWNHC will be notified



Wildlife Protection Plan

Update:

- Attempting to schedule meetings with the HTC's and WMAC (NWT) to finalize the plan, planned for late June
- Draft 2 was provided for review in March 2013
- DOT looking to finalize



Community / Local Involvement

- Local technicians and Wildlife Monitors will be hired for all surveys, where possible
- Local Inuvialuit businesses will be considered first for employment, including:
 - Helicopter rental
 - Small equipment rental